

Warm-up

Getting a Centered and Relaxed Sound



Trombone and Euphonium Studio

Breathing – Breathe in a relaxed manner.

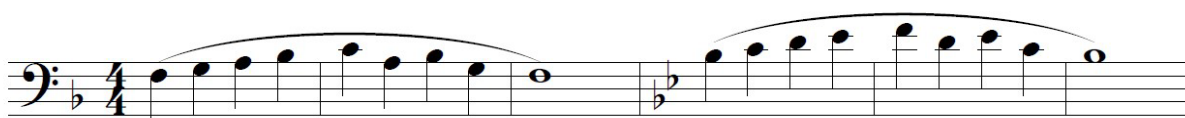
In for 1 out for 1. Once relaxed, in for 1 out for 2, then out for 4. Make sure you use a circular breath, always in or out, never stopping on the top or bottom.

Buzzing – Buzz sirens (up and down or down and up). Learn how your aperture and wind work together.

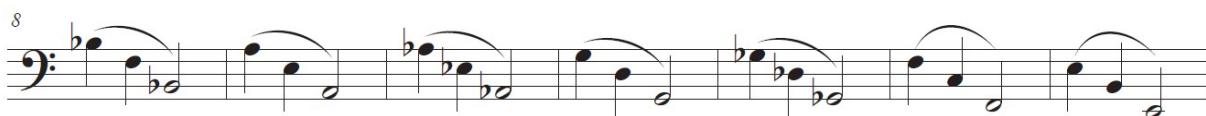
Calibrate – Using a metronome and a drone, buzz/play your descending arpeggios. The Remington Warm-up Studies and the Caruso Method are resources to find more information.



Ear-Training – Use John Schlabach's system to learn the pitch tendencies of your horn and each key area. Please use Sing/Buzz/Play, progress through every key. (Schlabach No. 1)



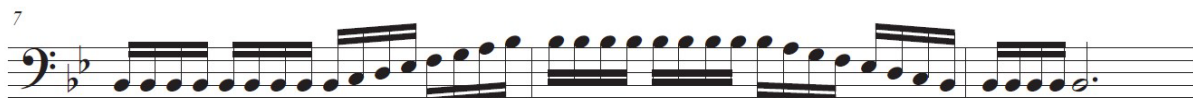
Lip Slurs – Continue using a metronome and subdividing while you perform slow and fast slurs. Brad Edwards's book *Lip Slurs* is a great resource for challenging lip-slurs.



Articulation – Articulation is about blowing a whole note while coordinating your tongue. Try articulating on an airstream with a target (Pinwheel). Use a metronome! Taken from Michael Davis's *20-minute Warm-up*.



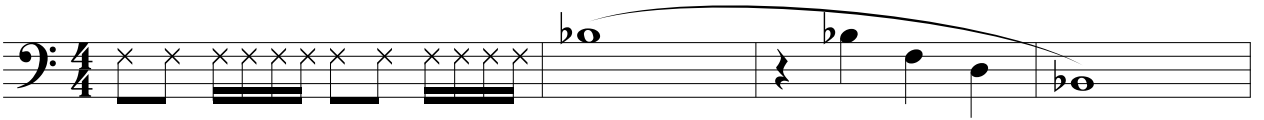
Scales – Remember to vary your scale patterns to increase your slide technique ability. Look in Arban's *Complete Method* or Milt Stevens's *Scale & Arpeggio Routine* for more patterns. This example is from James Stamp's *Warm-ups and Studies for Trumpet*.



Think/Buzz/Play

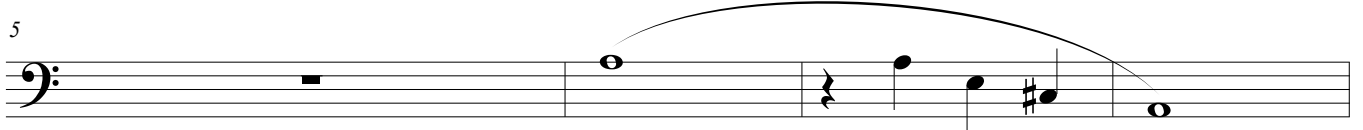
Always Use a Metronome and Subdivision

Trombone



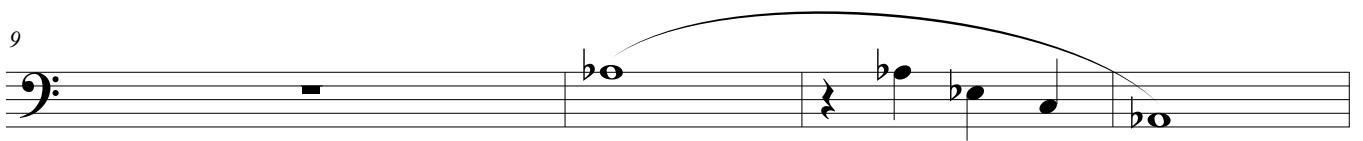
5

Tbn.



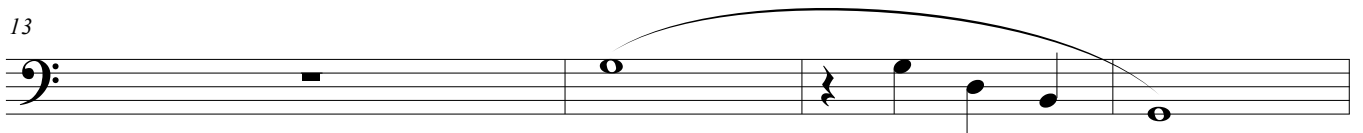
9

Tbn.



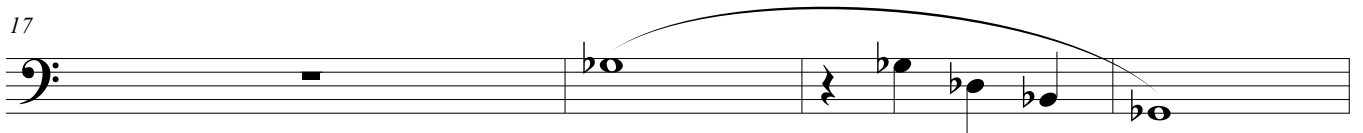
13

Tbn.



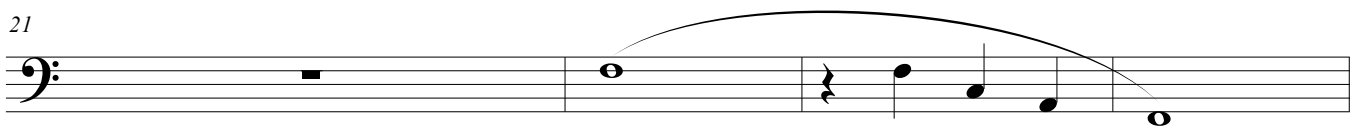
17

Tbn.



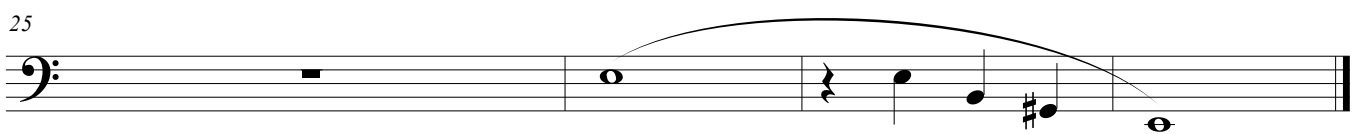
21

Tbn.



25

Tbn.



Schlabach No. 1

Complete Article at www.russzokaites.com/resources

Trombone

Musical notation for Trombone, measures 1-6. The staff is in bass clef, 4/4 time, and B-flat major. It features a melodic line with a slur over measures 1-6, ending with a whole note.

Tbn.

Musical notation for Trombone, measures 7-12. The staff is in bass clef, 4/4 time, and B-flat major. It features a melodic line with a slur over measures 7-12, ending with a whole note.

Tbn.

Musical notation for Trombone, measures 13-18. The staff is in bass clef, 4/4 time, and B-flat major. It features a melodic line with a slur over measures 13-18, ending with a whole note.

Tbn.

Musical notation for Trombone, measures 19-24. The staff is in bass clef, 4/4 time, and B-flat major. It features a melodic line with a slur over measures 19-24, ending with a whole note.

Tbn.

Musical notation for Trombone, measures 25-30. The staff is in bass clef, 4/4 time, and B-flat major. It features a melodic line with a slur over measures 25-30, ending with a whole note.

Tbn.

Musical notation for Trombone, measures 31-36. The staff is in bass clef, 4/4 time, and B-flat major. It features a melodic line with a slur over measures 31-36, ending with a double bar line.

Tonguing

Trombone

Measures 1-4: G2, F2, E2, D2. Tonguing marks (v) are above notes 1-4. A thick black bar is under measures 3-4.

Tbn. 5

Measures 5-8: C2, B1, A1, G1. Tonguing marks (v) are above notes 5-8. A thick black bar is under measures 7-8.

Tbn. 9

Measures 9-12: F2, E2, D2, C2. Tonguing marks (v) are above notes 9-12. A thick black bar is under measures 11-12.

Tbn. 13

Measures 13-16: B1, A1, G1, F1. Tonguing marks (v) are above notes 13-16. A thick black bar is under measures 15-16.

Tbn. 17

Measures 17-20: E2, D2, C2, B1. Tonguing marks (v) are above notes 17-20. A thick black bar is under measures 19-20.

Tbn. 21

Measures 21-24: G1, F1, E1, D1. Tonguing marks (v) are above notes 21-24. A thick black bar is under measures 23-24.

Tbn. 25

Measures 25-28: B1, A1, G1, F1. Tonguing marks (v) are above notes 25-28. A thick black bar is under measures 27-28.

Tbn. 29

Measures 29-32: E2, D2, C2, B1. Tonguing marks (v) are above notes 29-32. A thick black bar is under measures 31-32.

Schlossberg

More Slurs

Trombone



Tbn. 8



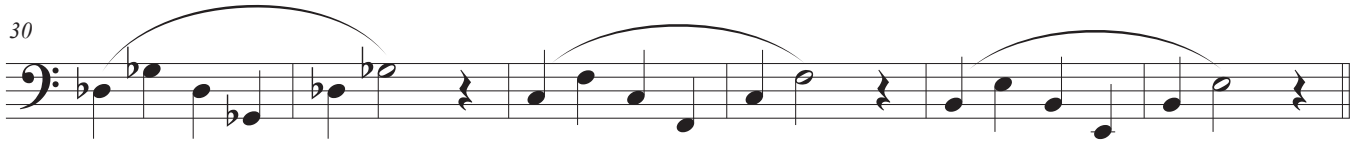
Tbn. 15



Tbn. 22



Tbn. 30



Tbn. 36



Tbn. 44



Tbn. 50

